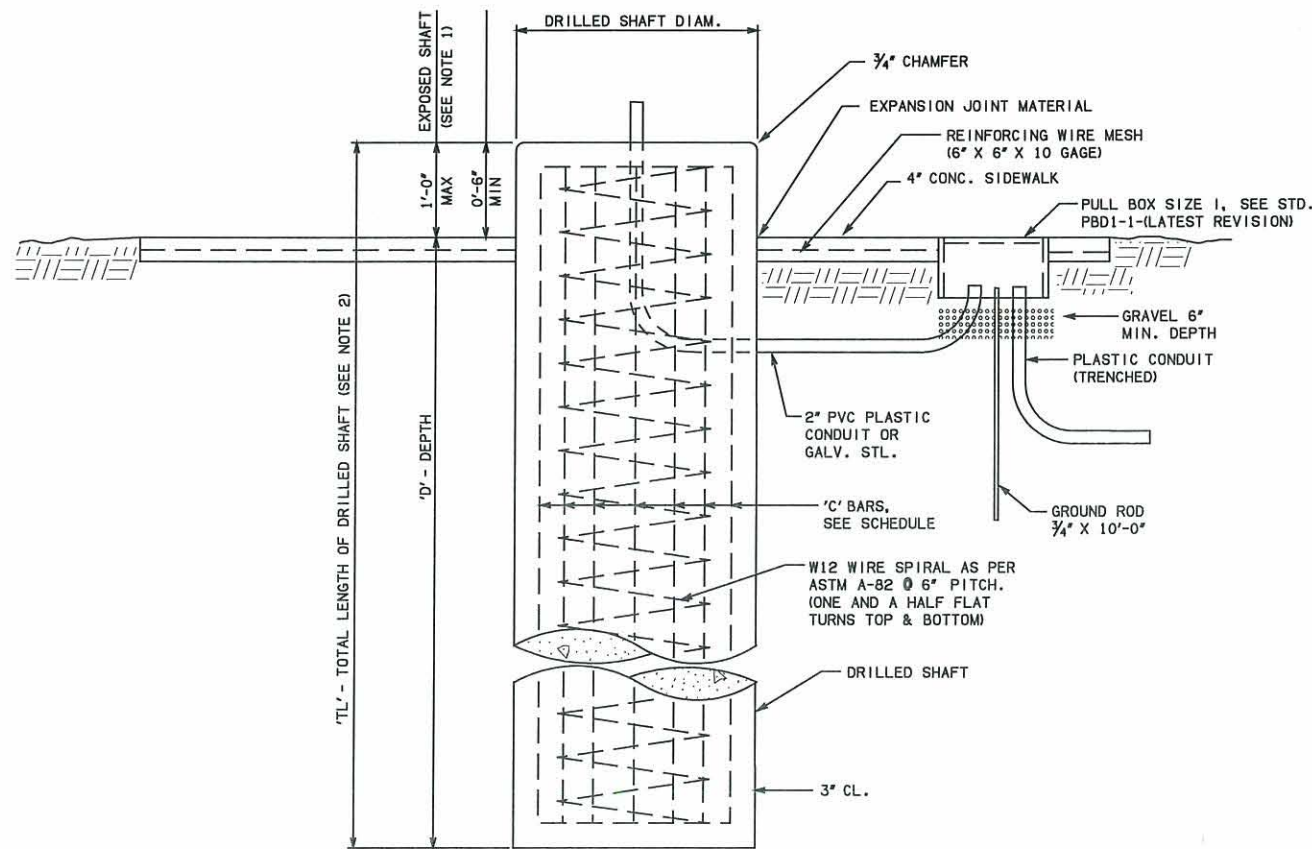
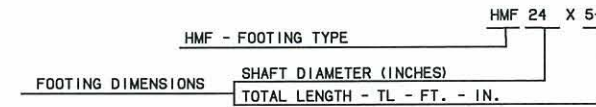


PLAN VIEW



TYPICAL HIGH MAST POLE FOOTING  
SIDE VIEW

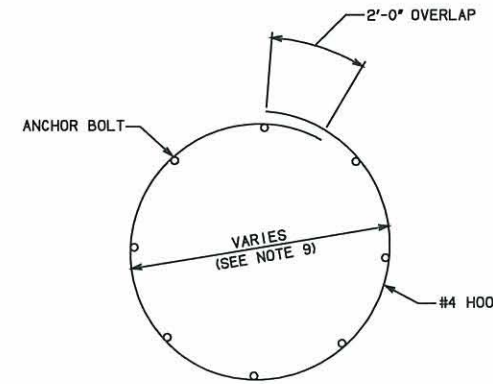
SCHEDULE OF FOOTING QUANTITIES							
FOOTING ID NO.	'C'-BARS		ESTIMATED QUANTITIES PER L.F.		4\"/>		
	NO. REQ'D.	SIZE	REINFORCING STEEL LBS.	CLASS AA CONC. C.Y.		4\"/>	
HMF-36 X 'TL'	11	NO. 9	45.4	0.262	21.55	6'-6"	1
HMF-42 X 'TL'	14	NO. 9	57.8	0.356	21.27	6'-3"	1
HMF-48 X 'TL'	19	NO. 9	75.8	0.465	21.00	6'-0"	1



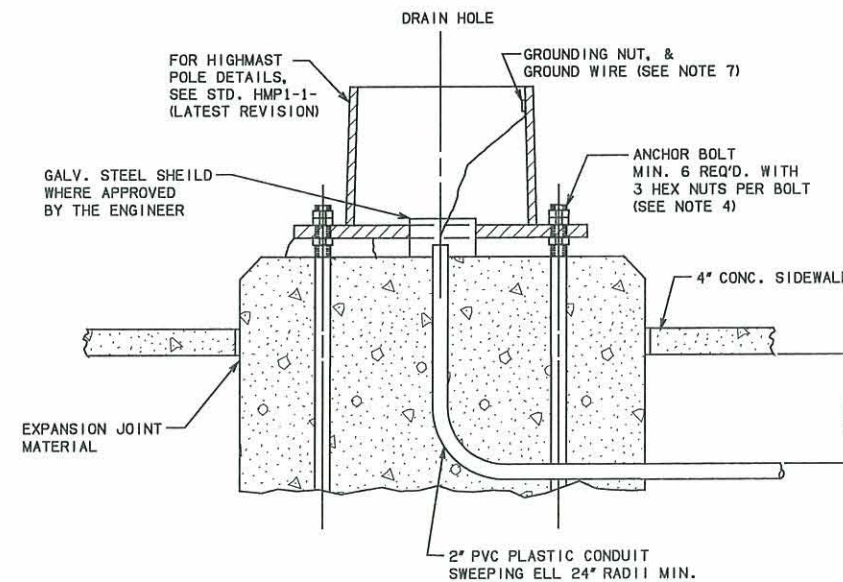
NOTE:  
IF ANCHOR BOLT DATA IS NOT SPECIFIED IN THE PLANS, THE ANCHOR BOLT SIZE AND PLACEMENT SHALL BE IN ACCORDANCE WITH THE APPROVED SHOP DRAWINGS FOR THE POLES.

FOOTING DESIGN NO.

DESIGN DATA	
CLASS AA CONCRETE	1,200 LBS. PER SQ. IN.
REINFORCING STEEL	20,000 LBS. PER SQ. IN.



OPTIONAL ANCHOR BOLT CAGE



TYPICAL FOOTING DETAIL

DESCRIPTION	REVISIONS	DATE
-------------	-----------	------

GENERAL NOTES

- FOR EXACT LOCATIONS, AND ACTUAL DEPTH "D" FOR EACH FOOTING, SEE THE PLAN SHEETS.
- THE EXPOSED PORTION OF THE DRILLED SHAFT SHALL BE MEASURED FOR PAYMENT AS "DRILLED SHAFT".
- THE VERTICAL C-BARS SHALL BE ONE PIECE THROUGHOUT THE FULL LENGTH OF THE DRILLED SHAFT.
- THE ANCHOR BOLTS SHALL BE CAGED PRIOR TO INSTALLATION AND SHALL BE INSTALLED IN ACCORDANCE WITH THE APPROVED SHOP DRAWINGS AND THE SPECIFICATIONS FOR HIGH MAST POLES. THE ANCHOR BOLT CAGE SHALL PROVIDE THE MINIMUM 3" CLEARANCES SHOWN. IN THE EVENT OF A CONFLICT BETWEEN THE ANCHOR BOLT CAGE AND THE REINFORCING STEEL OR IF MINIMUM CLEARANCES CANNOT BE ACHIEVED, THE CONTRACTOR SHALL INSTALL A LARGER DIAMETER DRILLED SHAFT COMPLETE WITH ADDITIONAL CONCRETE AND REINFORCING STEEL. IF THE SIZE OF THE DRILLED SHAFT IS MODIFIED AS A RESULT OF THE ABOVE, IT SHALL BE APPROVED BY THE ENGINEER PRIOR TO INSTALLATION. THE CONTRACTOR SHALL RECEIVE NO ADDITIONAL COMPENSATION FOR THE EXTRA MATERIALS OR WORK REQUIRED.
- THE COST OF THE GALV. STEEL CONDUIT SHALL BE INCLUDED IN OTHER ITEMS OF WORK. THE PLASTIC CONDUIT SHALL BE PAID FOR AT THE UNIT PRICE BID FOR THE SCH. 40 PLASTIC CONDUIT (TRENCHED).
- THE POLE SHALL BE GROUNDED WITH A NO. 4 AWG BARE COPPER WIRE BOLTED TO THE INSIDE OF THE POLE AND EXTENDED TO THE COPPERCLAD GROUND ROD AND CLAMP LOCATED IN THE PULL BOX. GROUNDING SHALL PROVIDE FOR NOT OVER 25 OHM RESISTANCE TO GROUND, SHOULD ADDITIONAL GROUNDING EQUIPMENT BE REQUIRED, IT SHALL BE FURNISHED BY THE CONTRACTOR AT NO EXTRA CHARGE. THE CONTRACTOR SHALL FURNISH THE EQUIPMENT REQUIRED TO CHECK THE RESISTANCE TO GROUND MEASUREMENTS.
- THE CONCRETE SIDEWALK SHALL BE INSTALLED TO FIT EXISTING FIELD CONDITIONS AS DIRECTED BY THE ENGINEER. THE 6" X 6" X 10 GAGE WIRE MESH REINFORCEMENT SHALL BE INCLUDED IN THE UNIT PRICE BID FOR THE "4" CONCRETE SIDEWALK".
- THE HOOP DIAM. VARIES TO FIT THE OUTSIDE DIAMETER OF THE ANCHOR BOLTS.
- FOR ADDITIONAL DETAILS ON THE HIGH MAST POLE, SEE STD. HMP1-1-(LATEST REVISION).
- INCLUDES 1 FOOT OF EXPOSED SHAFT PER LOCATION. DRILL SHAFT DEPTHS ARE SUBJECT TO REVISION. THE CONTRACTOR SHALL CONSULT THE ENGINEER PRIOR TO ORDERING THE REINFORCING STEEL.

BASIS OF PAYMENT

ITEM NO.	ITEM	UNIT
509(A)	CLASS AA CONCRETE	CY
516(A)	DRILLED SHAFTS	LF
610(A)	CONCRETE SIDEWALK	SY
803(A)	PULLBOX	EA
804(B)	REINFORCING STEEL	LB



APPROVED BY  
TRAFFIC ENGINEER *Herald Smith* DATE: 01/19/10  
TRAFFIC STANDARD

TYPICAL HIGH MAST FOOTING DETAILS